

## Halla – child's cabled hat

Design by iona, <http://iona.kapsi.fi/blog/>



*Size: kids 3-4 years old, head circumference approx. 52 cm*

*Yarn suggestion: Asa Gjestal Topp't Tå*

*Needle size: 6 mm dpns, 6 mm / 40 cm circular (US 10)*

*Gauge: 15 stitches and 20 rows in cable stitch = 10 cm (Note: measures are taken after blocking, cables spread a lot!)*

*Patterns: Cable stitch: see chart 1. Rib stitch: k2, p2.*

**Earflaps:** (see also chart 2). CO 4s. Row 1: Knit across.

2: Purl across. CO 2 s in the end of row using looped cast-on method. (All increases to flap are made by casting on stitches.)

3: P2, K4, P2, CO 2.

4: K2, P4, K2, CO 2.

5: K2, P2, C4F, P2, CO 2.

6: P2, K2, P4, K2, P2, CO 2.

7: P2, K2, P2, K4, P2, K2, CO 2.

Rows 8, 10 and 12: K2, P2, K2, P4, K2, P2, K2

Row 9: P2, K2, P2, K4, P2, K2, P2

Row 11: P2, K2, P2, C4F, P2, K2, P2

Cut yarn, and place first earflap on holder. Make another earflap in the same way. Keep the second flap on needles and do not cut yarn.

**Hat:** With right side of the earflap facing, CO 14 sts using knitted cast-on. Cut yarn. Move the other earflap from the holder back on the needle in front of the other earflap: now you have both flaps on the needle with 14 new stitches between them.

Work across the flap, neck, and flap continuing with the cable pattern. Turn work. Knit the knit stitches and purl the purl stitches. Turn work. Using knitted cast-on, CO 24 sts (forehead). Work across following chart 1. Join for working in the round (join is on left side of forehead). Continue knitting in the round following chart 1 for 13 cm.

**Decreasing:** Follow chart 3. Switch to dpns when necessary. When you have 14 sts remaining, cut yarn and pull through remaining sts, pulling tightly.

**Edging:** Starting from the middle of the neck, pick up around the edge about 88 sts (number of stitches must be divisible by four). K2 P2 in the round for two rows, bind off loosely.

**Finishing:** Weave in all ends. Block and lay flat to dry. Make a pom-pom for the top of the hat and create braids to attach to the earflaps. Optionally, add a jersey or micro fleece lining.

# Charts

Chart 1: Cable pattern

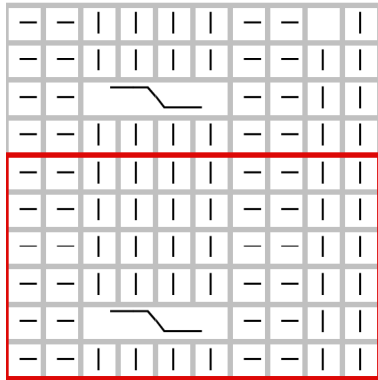


Chart 2: Earflap

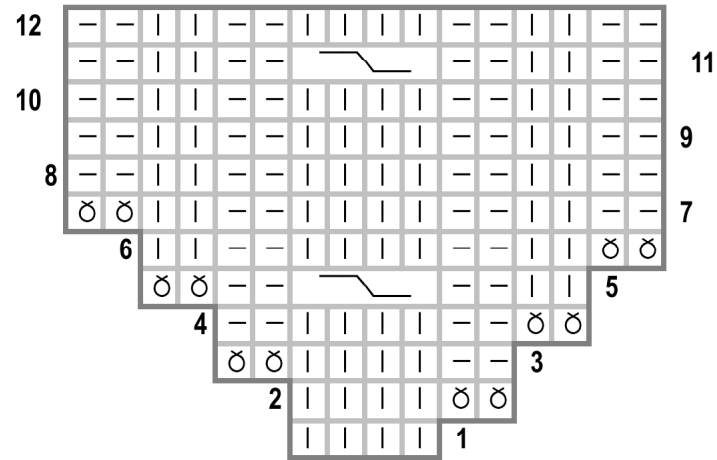
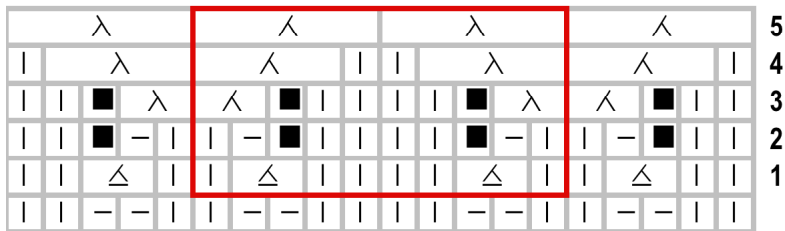


Chart 3: Decreasing



Stitch legend

- | knit
- purl
- ø cast on 1 s using looped cast-on
- cross 4 sts front  
(slip 2 sts on a cable needle to front, knit 2, knit 2 sts from the cable needle)
- △ purl 2 together
- no stitch
- ∧ knit 2 together
- λ slip slip knit